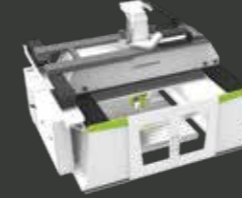
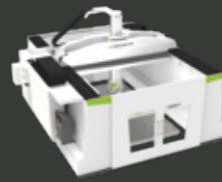
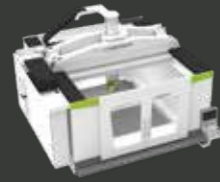







# Product overview



Machine Types
<b>Characteristic</b>
<b>Working Ranges *</b>
X-Axis
Y-Axis
Z-Axis
<b>Milling Heads/Spindels **</b>
<b>VH 10</b> 
<b>VH 20</b> 
<b>VH 30</b> 
<b>VH 40</b> 
<b>VH 60</b> 
<b>M3 ABC</b> 

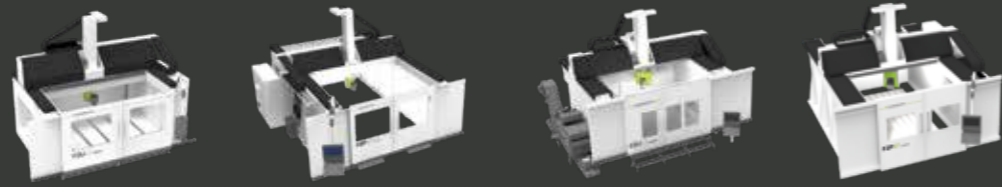
FZ32 Gantry Line	
FZU32	FZP32
Unibody Gantry.	Performance Gantry.
Working Ranges *	
X-Axis	2 000 – 6 000 mm
Y-Axis	3 000/3 500 mm
Z-Axis	1 250/1 500 mm
Milling Heads/Spindels **	
VH 10	
34/41 kW, 39/49 Nm 24 000 rpm, HSK-A63	
VH 20	
VH 30	
VH 40	
VH 60	
M3 ABC	

FZ37 Gantry Line	
FZU37	FZP37
Unibody Gantry.	Performance Gantry.
Working Ranges *	
X-Axis	2 500 – 6 000 mm
Y-Axis	3 000/3 500/4 000 mm
Z-Axis	1 250/1 500 mm
Milling Heads/Spindels **	
VH 10	
34/41 kW, 39/49 Nm 24 000 rpm, HSK-A63	
VH 20	
39/52 kW, 32/43 Nm 24 000 rpm, HSK-A63 42/48 kW, 67/76 Nm 24 000 rpm, HSK-A63	
VH 30	
25/31 kW, 119/148 Nm 20 000 rpm, HSK-A63 70/86 kW, 167/229 Nm 15 000 rpm, HSK-A100 74/78 kW, 73/92 Nm 30 000 rpm, HSK-A63/80 125/156 kW, 60/75 Nm 30 000 rpm, HSK-A63/80	
VH 40	
VH 60	
M3 ABC	

FZ42 Gantry Line	
FZU42	FZP42
Unibody Gantry.	Performance Gantry.
Working Ranges *	
X-Axis	2 500 – 6 000 mm
Y-Axis	3 000/3 500/4 000 mm
Z-Axis	1 250/1 500 mm
Milling Heads/Spindels **	
VH 10	
VH 20	
VH 30	
VH 40	
VH 60	
M3 ABC	

Horizontal Machining Center
FZH
High Performance Machining Center.
Working Ranges *
X-Axis
Y-Axis
Z-Axis
Milling Heads/Spindels **
VH 10
VH 20
VH 30
VH 40
VH 60
M3 ABC

# Product overview



Machine Types	FZ22 Gantry Line		FZ27 Gantry Line	
	FZU22	FZP22	FZU27	FZP27
Characteristic	Unibody Gantry.	Performance Gantry.	Unibody Gantry.	Performance Gantry.
<b>Working Ranges *</b>				
X-Axis	1 800/2 500 mm	3 000 – 20 000 mm	2 000 – 4 000 mm	3 000 – 20 000 mm
Y-Axis	3 000/3 500 mm	3 000/3 500 mm	2 500/3 000/3 500 mm	2 500 – 4 000 mm
Z-Axis	1 250 mm	1 250 – 1 500 mm	1 250 – 1 750 mm	1 500 – 2 000 mm
<b>Milling Heads/Spindles **</b>				
<b>S2</b> 	15/18 kW, 12/14 Nm 24 000 rpm, HSK-F63		15/18 kW, 12/14 Nm 24 000 rpm, HSK-F63	
<b>C2</b> 	15/18 kW, 12/14 Nm 24 000 rpm, HSK-F63		15/18 kW, 12/14 Nm 24 000 rpm, HSK-F63	
<b>C3</b> 			20/26 kW, 32/41 Nm 26 000 rpm, HSK-F63 24/27 kW, 38/43 Nm 18 000 rpm, HSK-A63 25/35 kW, 60/83 Nm 15 000 rpm, HSK-A63	
<b>VH 10</b> 			34/40 kW, 39/40 Nm 24 000 rpm, HSK-A63	



➤ **Machining Solutions and you**